

# MI Paste™ and MI Paste Plus™ – No Matter Who You Are



## Are your teeth sensitive to hot or cold?

Tooth sensitivity has many causes, such as cracked or decayed teeth, worn enamel or fillings, exposed roots, and gum recession and disease.

*MI Paste quickly soothes sensitivity by protecting dental nerve endings, forming a buffer against plaque and restoring minerals that help strengthen teeth.*



## Have you ever whitened your teeth?

A bright, white smile is a beautiful sight, but tooth-whitening procedures can lead to increased tooth sensitivity afterwards.

*MI Paste greatly reduces tooth sensitivity by protecting dental nerve endings, forming a buffer against plaque and restoring minerals that keep teeth strong.*



## Do you wear braces?

Wearing braces can trap food, causing plaque buildup and making it more difficult to keep teeth clean.

*MI Paste guards against plaque buildup and harmful bacteria, strengthens tooth enamel and helps prevent white spot lesions from forming. After removing the bands, MI Paste helps increase the enamel's appearance and reflectivity.*



## Have you ever had dry mouth?

Dry mouth can be caused by many factors, such as aging, medications, disease, chemotherapy, and even stress.

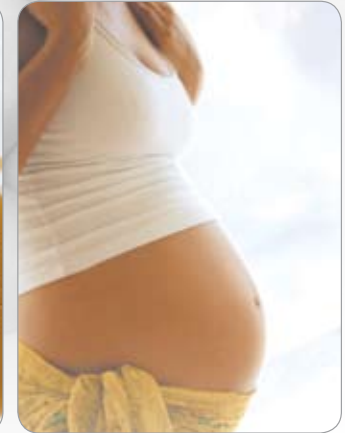
*MI Paste relieves dry mouth by restoring that "normal feeling" of saliva lubrication. MI Paste also restores healthy components of saliva, such as calcium and phosphate, that help safeguard the oral environment against the risk of tooth decay.*



## Do you enjoy soft drinks?

Soda and sports drinks can increase your chances of developing tooth erosion and decay.

*MI Paste can help prevent tooth damage by strengthening enamel, forming a buffer against plaque and improving the flow of saliva – your body's natural oral defense system.*



## Are you pregnant?

Pregnancy, especially if you're nauseated, can produce high oral acid levels that can lead to tooth enamel erosion.

*MI Paste minimizes dental erosion while pregnant by reducing high oral acid levels, improving saliva flow and maintaining high mineral levels that keep teeth healthy.*

## Easy at Home Application!

*MI Paste Plus is not recommended for children age 6 and under.*



Squeeze a small amount onto finger.



Apply to teeth using the tongue to spread over entire area.



Leave for at least 3 minutes. Expectorate but do not rinse. Leave the excess to slowly dissipate.

Ask your dental professional today how MI Paste and MI Paste Plus can help YOU!



www.gcamerica.com • 800.323.7063  
SKU 650112 • © GC America Inc.

Learn more at [www.MI-Paste.com](http://www.MI-Paste.com)