

ACID EROSION

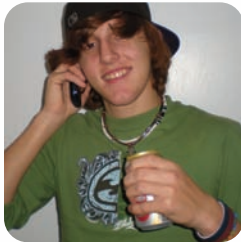
Are your teeth eroding or wearing away?

Dental erosion is caused by acid originating from the external environment or from within our own bodies. External dietary sources linked to erosion include soda drinks, diet drinks, alcohol and sour acidic foods. If you are pregnant, have gastro esophageal reflux disease, or have an eating disorder, your body can produce high oral acid levels that can lead to tooth enamel erosion.

MI Paste™ / MI Paste Plus™

- *Minimizes dental erosion by reducing high oral acid levels*
- *Helps improve salivary flow*
- *Supplies and replenishes calcium and phosphate to help prevent mineral loss from teeth*
- *Helps soothe and prevent tooth sensitivity*
- *Helps strengthen teeth against tooth decay*

Additional Recommendations:



MI Paste Plus™ contains 900ppm fluoride (almost same amount as regular fluoride toothpaste). MI Paste™ does **not** contain fluoride.

GC
MI Paste™
MI Paste Plus™

SKU #690504



Pregnant?

Avoiding acidic foods and drinks helps prevent erosion. If you have a medical condition, consult with your physician on how to prevent stomach acid from being regurgitated into your mouth. If you are pregnant and your nausea is temporary, it is still important to protect your teeth. MI Paste™ / MI Paste Plus™ can be used for patients with dental erosion and tooth wear. A twice daily application of MI Paste™ / MI Paste Plus™ will help soothe sensitive teeth and protect areas of exposed roots, as well as, replenish minerals in and on the teeth.



Easy At-Home Application

MI Paste Plus™ is recommended for patients age six and older.

*Use regular MI Paste™ for patients under the age of six and for **expectant mothers**.*



Squeeze a small amount onto finger.



Apply to teeth using finger to spread over all tooth surfaces.



Leave for at least 3-5 minutes. Expectorate (spit) but do not rinse. Leave the excess to slowly dissolve.

GC
MI Paste™
MI Paste Plus™

Ask your dental professional today how MI Paste™ and MI Paste Plus™ can help you!

Learn more at www.mipaste.com
or www.gcamerica.com or call
800.323.7063

How Often

Minimum twice a day. Additional applications may be suggested based on severity and frequency of acid challenges.

When

Before (for protection) and **after** exposure to acid challenges.

How Long

On-going, as needed.

How

Finger application or custom tray application.

Other

Patient and dental professional to assess source of acid exposure and level of salivary protection. Where possible reduce acid exposure and encourage saliva stimulation to decrease the risk of erosion.